

GROUND FLOOR	C	3 (1 bed)	4 (2 bed)
FIRST FLOOR	7	3 (1 bed)	4 (2 bed)
SECOND FLOOR	7	3 (1 bed)	4 (2 bed)
THIRD FLOOR	4	2 (2 bed)	2 (3 bed)
OVERALL:	25	9 (1 bed)	14 (2 bed) 2 (3 bed)

OVERALL UNITS: 25

CAR PARKING
AS PER THE 2018 DEPARTMENT OF HOUSING, PLANNING AND LOCAL GOVERNMENT PLANNING GUIDELINES, REQUIREMENTS ARE FOR 1 CAR PARKING SPACE PER UNIT AND 1 VISITOR SPACE FOR EVERY 4 RESIDENTIAL UNITS:

25 + 6 = 31 PARKING SPACES REQUIRED

PROVIDED: 31 SURFACE PARKING

FINGAL COUNTY DEVELOPMENT PLAN 2017-2023 REQUIRES TWO MOBILITY SPACES PER 100 - ONE PROVIDED

BICYCLE PARKING

BICYCLE PARKING REQUIRED - 1 PER UNIT + 1 VISITOR SPACE FOR EVERY 4 UNITS = 25 + 6 = 31 BICYCLE PARKING SPACES REQUIRED

SECURE BICYCLE PARKING PROVIDED IN SECURE EXTERNAL STORE = 25
VISITOR BICYCLE PARKING PROVIDED AT CURTLAGE = 6

BLOCK C:

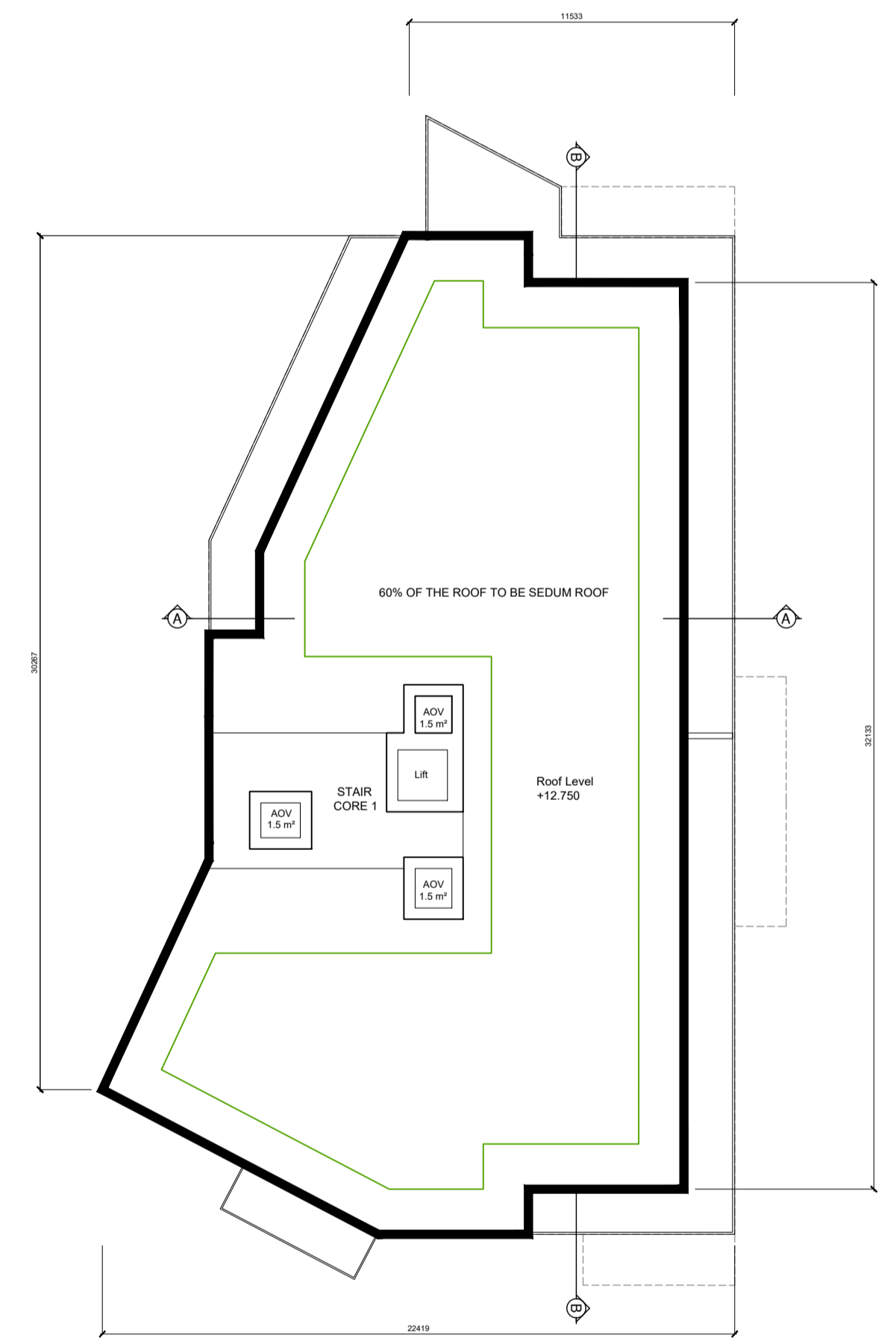
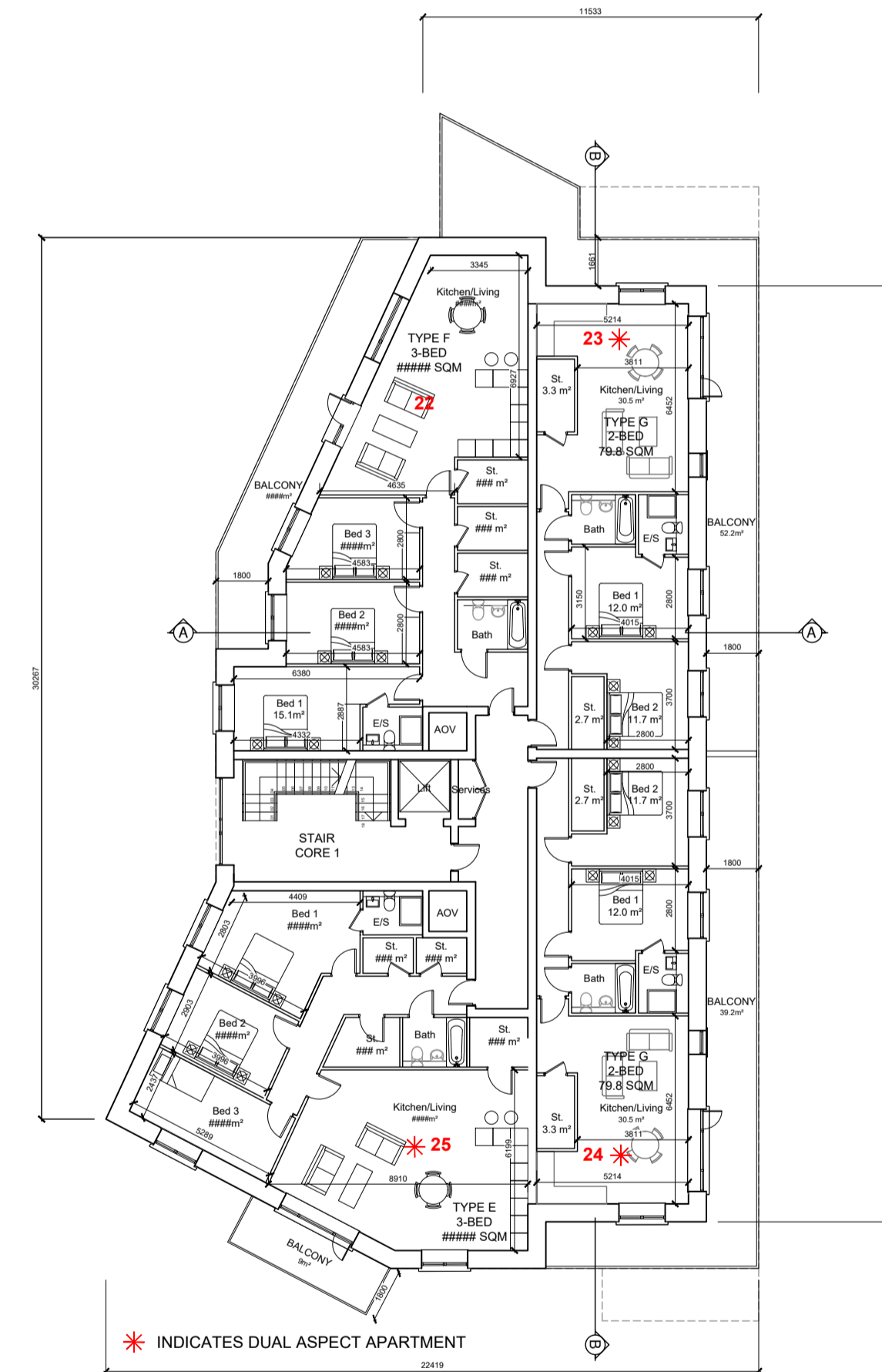
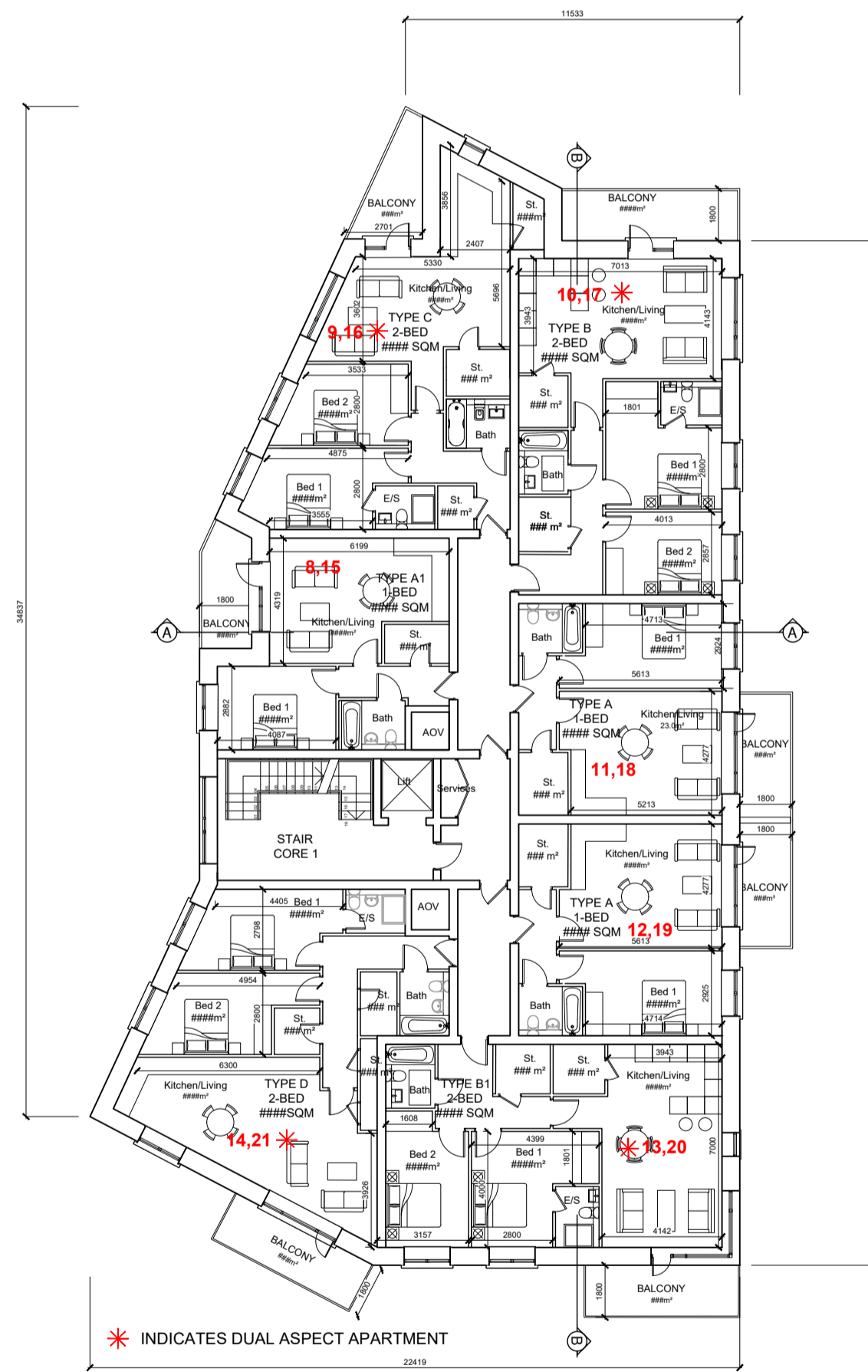
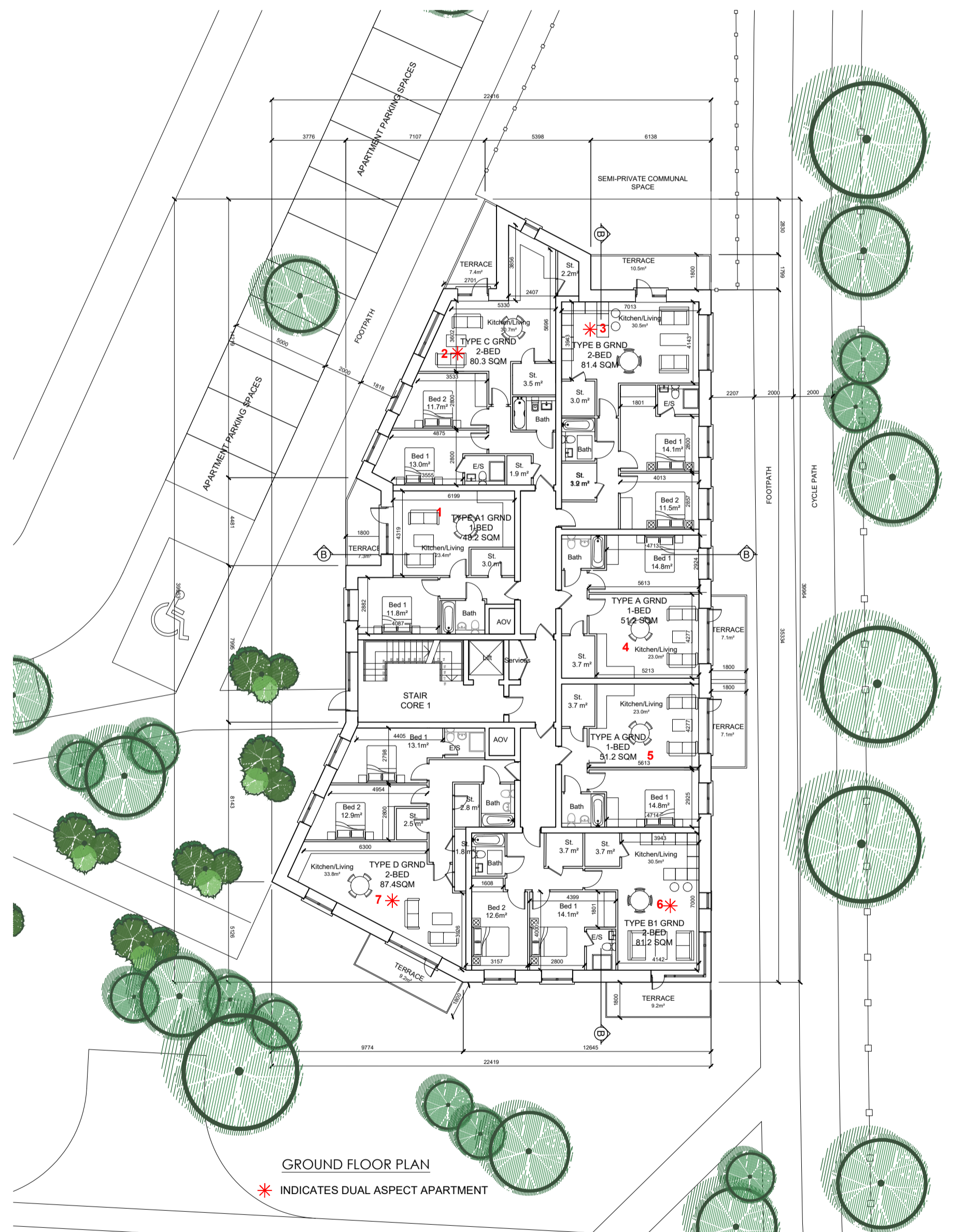
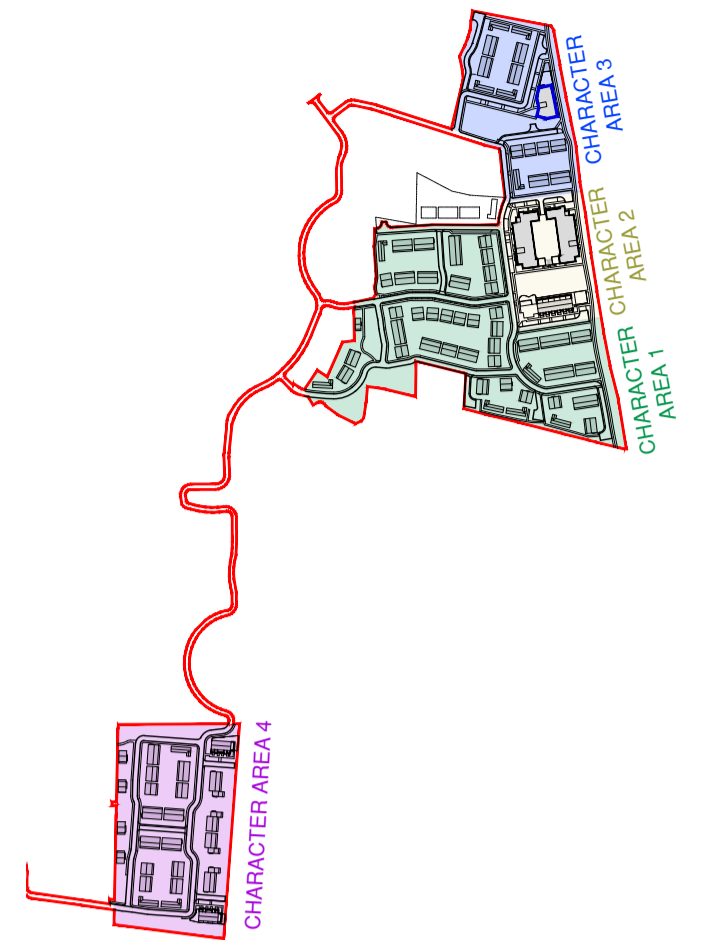
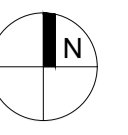
1-BED: 9 APARTMENT UNITS

2-BED: 14 APARTMENT UNITS

3-BED: 2 APARTMENT UNITS

DUAL ASPECT: 15 of 25

KEY PLAN



NOTES:

DO NOT SCALE FROM DRAWINGS. WORK TO FIGURED DIMENSIONS ONLY. ARCHITECT TO BE NOTIFIED OF ALL DISCREPANCIES.

REVISIONS

DATE	DESCRIPTION	No.

MCORM

M^CCROSSAN O'ROURKE MANNING ARCHITECTS

PROJECT TITLE: BROOMFIELD, BACK ROAD, MALAHIDE	DATE: FEB 22	DRAWN BY: POR
DRAWING TITLE: APARTMENT BLOCK C FLOOR PLANS	SCALE: 1:200	REVISION: -
JOB NO: 18034	DRAWING NO: PL211	

1 Grantham Street, Dublin 8, D08 A89Y, Ireland.
Tel: 01-4788700 Fax: 01-4788711 E-Mail: arch@mcorm.com